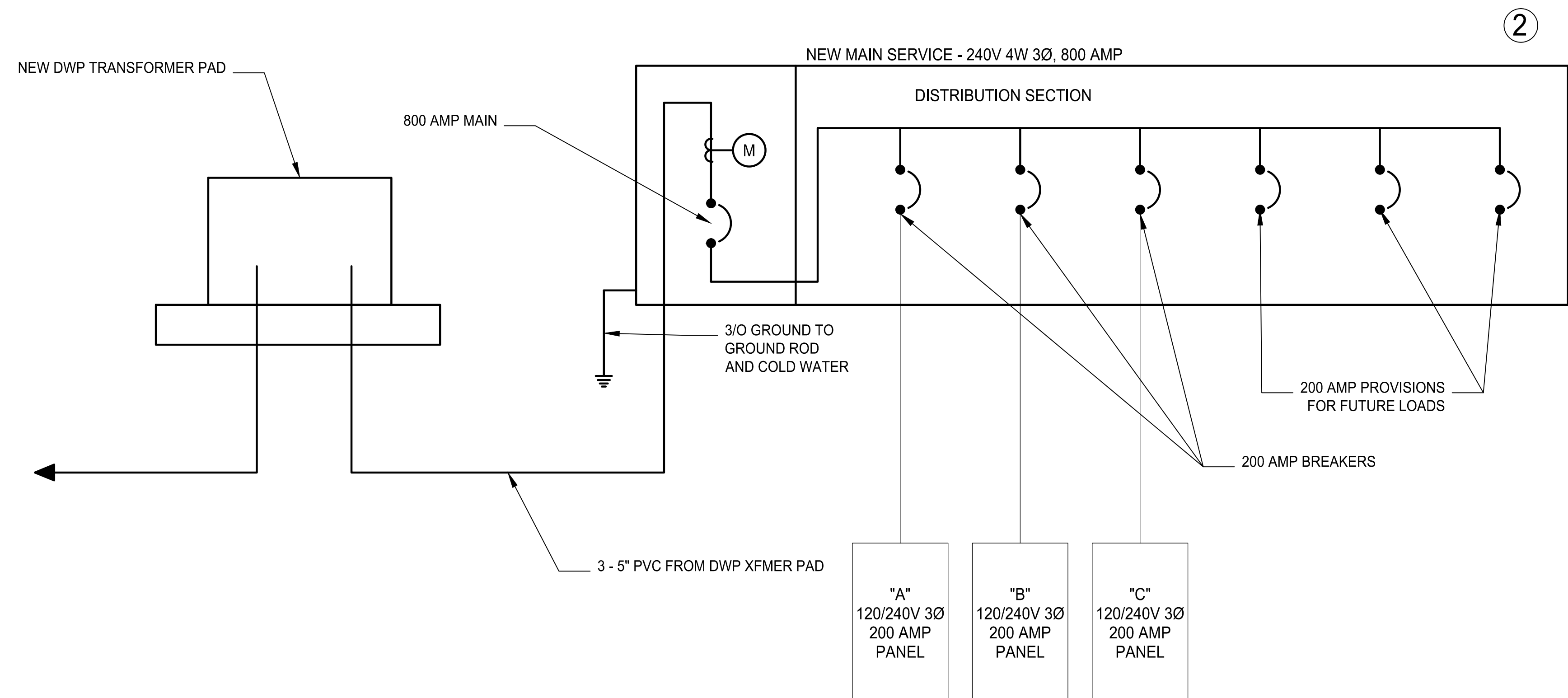
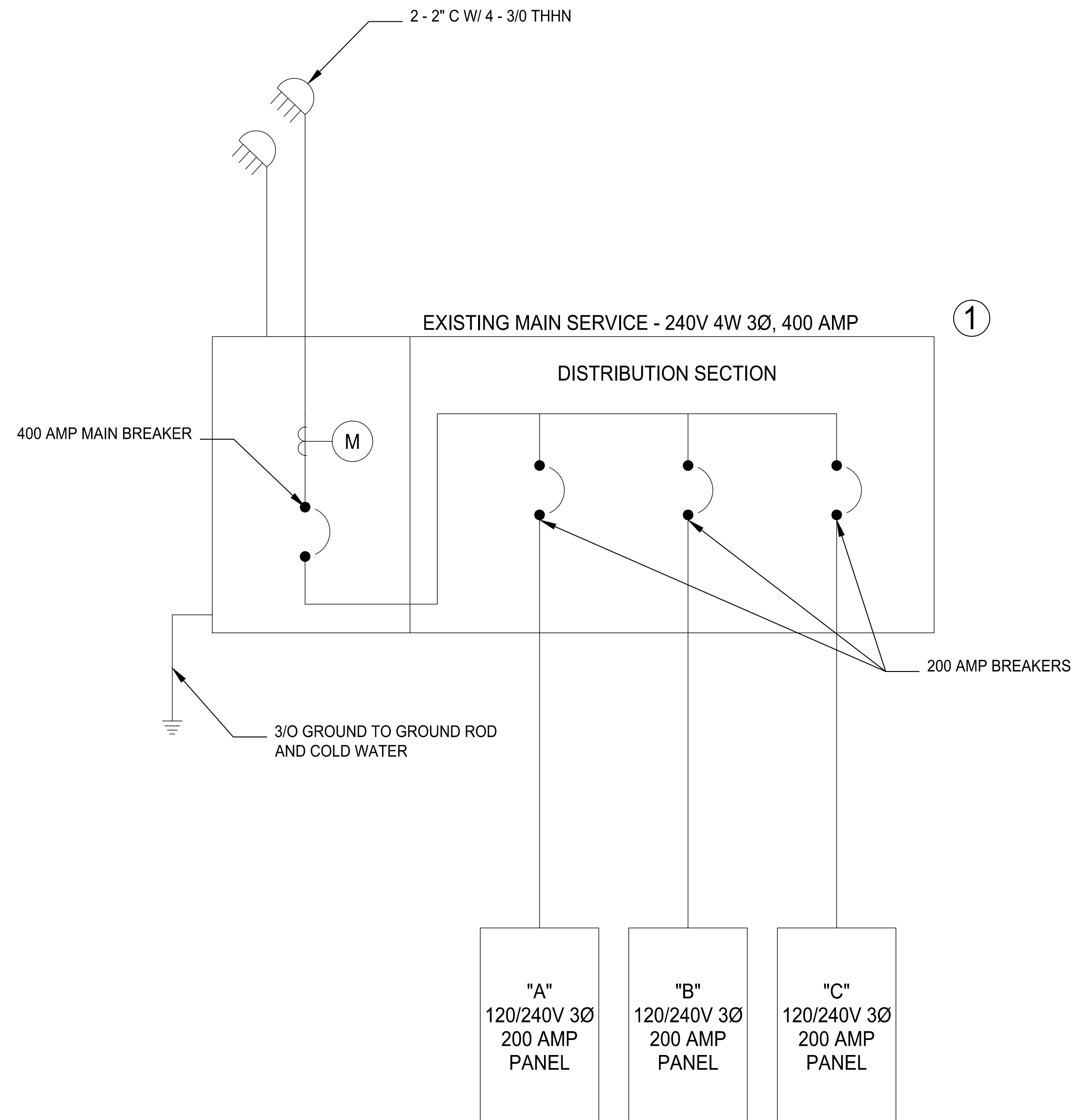


○ **SLD NOTES:** ○

1. REMOVE EXISTING 400 AMP SERVICE
2. REPLACE WITH NEW NEMA 3R 800 AMP AND RECONNECT EXISTING LOADS (SEE E-3 FOR NEW LOCATION)

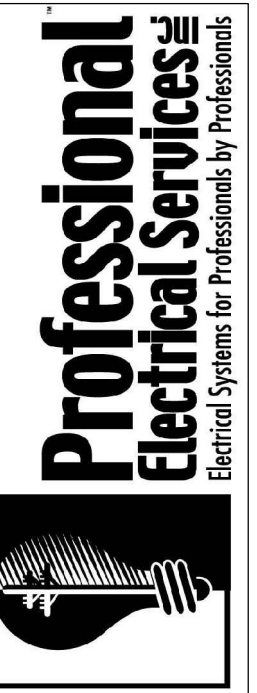


FOR QUESTIONS ABOUT THE DESIGN OR ENGINEERING CALL JOE URSINI AT PROFESSIONAL ELECTRICAL SERVICES (818) 612 3822

DESIGN/BUILD NOTES:

1. THESE DRAWINGS AND SPECIFICATIONS ARE THE SOLE PROPERTY OF AND COPYRIGHT BY PROFESSIONAL ELECTRICAL SERVICES, INC. THESE PLANS SHALL NOT BE USED, IN WHOLE OR IN PART BY ANY ENTITY OTHER THAN PROFESSIONAL ELECTRICAL SERVICES, INC. THESE PLANS REPRESENT A SCHEMATIC DESIGN/BUILD LAYOUT OF THE ELECTRICAL SYSTEMS; THESE PLANS MAY NOT INDICATE ALL MATERIALS THAT WILL BE REQUIRED TO PROVIDE A COMPLETE AND OPERATING ELECTRICAL SYSTEMS.
2. THESE PLANS WERE PREPARED UNDER THE EXEMPTION TO DIVISION 3 OF THE CALIFORNIA BUSINESS AND PROFESSIONS CODE BY SECTION 5537.2, AS THE LICENSED CONTRACTOR RESPONSIBLE FOR THE PREPARATION OF THESE DRAWINGS, ONLY PROFESSIONAL ELECTRICAL SERVICES, INC. MAY UTILIZE THEM.

2029 VERDUGO BLVD. #1034
MONTROSE, CA 91020
TEL: (818) 634-8512
WWW.PROESERVICES.COM
LICENSE C-10 #842486



NEW INDUSTRIAL SERVICE
DOWNTOWN LOS ANGELES

REVISIONS:
△

DRAWING TITLE:
EXISTING &
NEW
SINGLE LINE
DRAWINGS

DRAWN BY:
D.M.

SCALE:
N.T.S.

DRAWN DATE:

14 FEB 2015

SHEET NO.

E-1