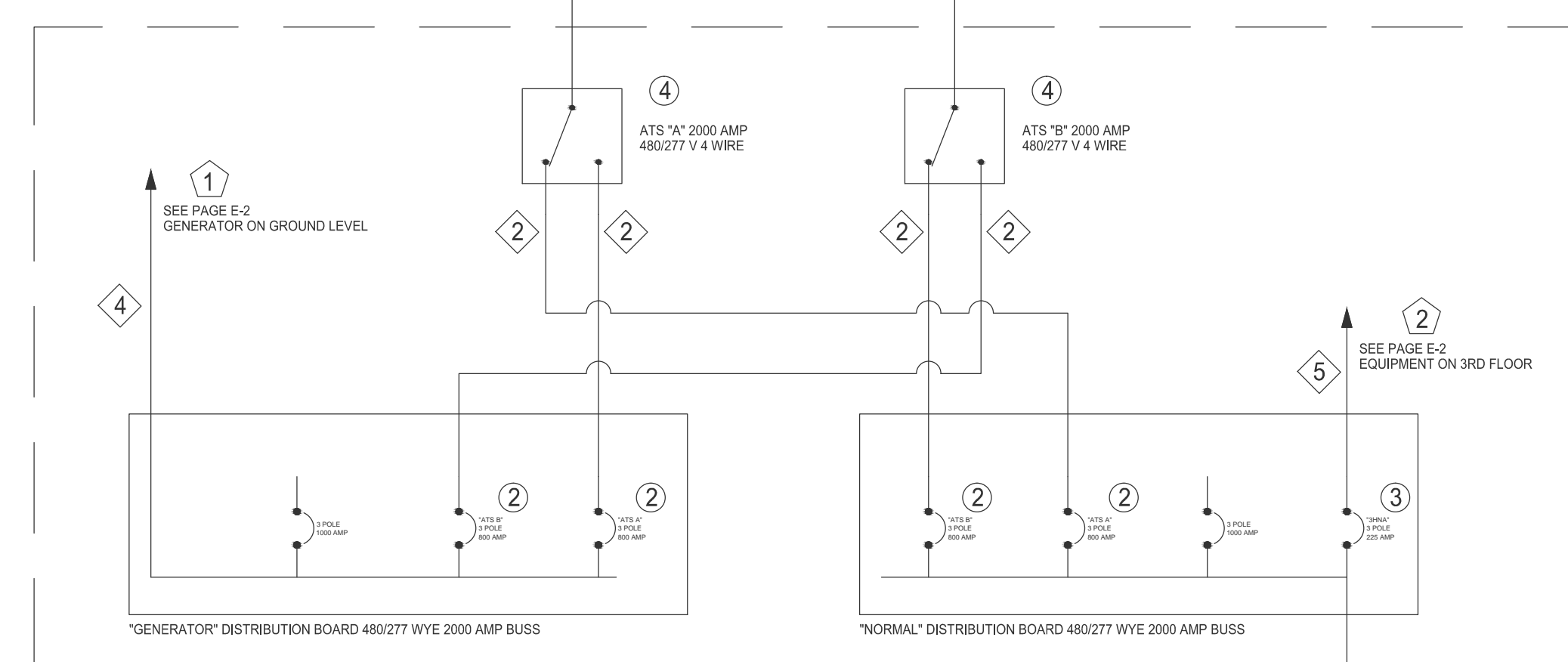
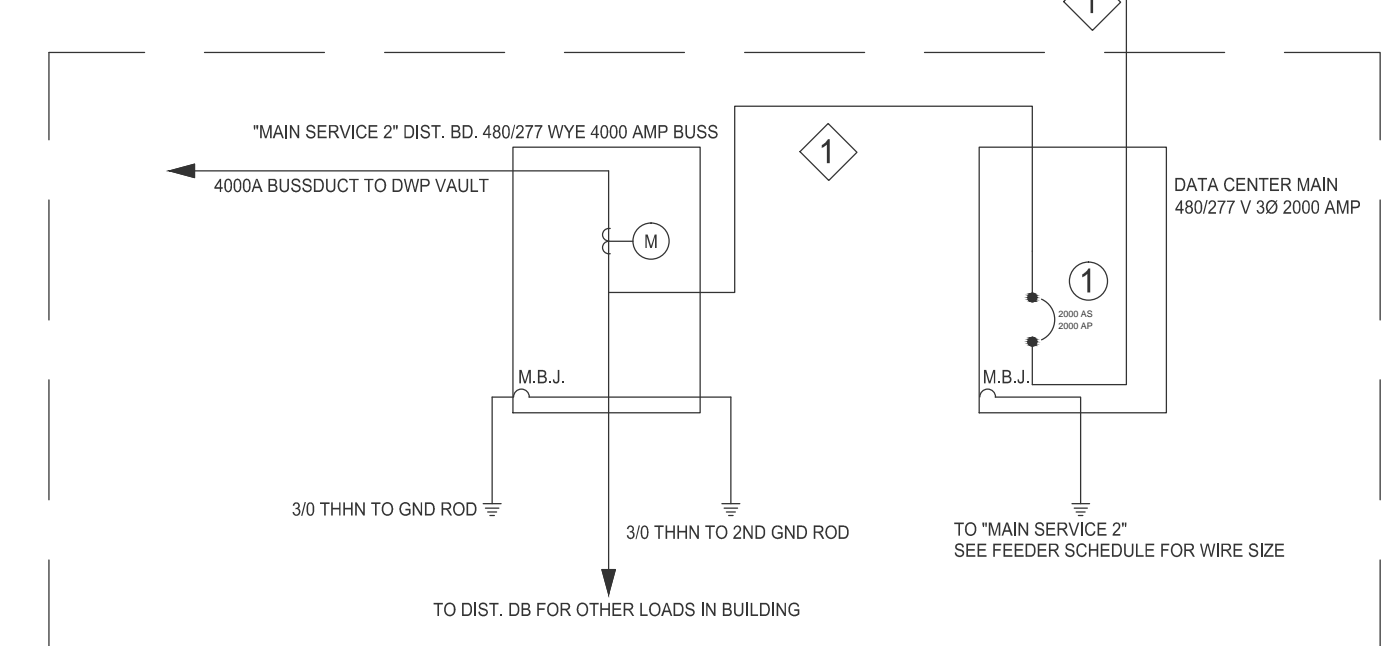


UPS ROOM



ATS ROOM



MAIN ELECTRICAL ROOM

- NOTES ON GROUNDING IN MAIN SERVICE**
1. THE WIREWAY BETWEEN "MAIN SERVICE 2" AND "DATA CENTER MAIN" HAS 2 GROUNDS RUN THROUGH IT. 1 - 4/0 RHW-2 AND 1 - 350 MCM THHN. THE 350 MCM WAS TESTED AND FOUND TO HAVE 58 AMPS OF CURRENT ON IT. THE 4/0 HAS 16 AMPS ON IT.
 2. THE WIREWAY BETWEEN "DATA CENTER MAIN" AND "NORMAL" DIST. BD. HAS THE SAME DOUBLE GROUND. THE 350 MCM HAS 16 AMPS OF CURRENT, AND THE 4/0 HAS 11 AMPS.
 3. THE M.B.J. IN "DATA CENTER MAIN" SECTION IS A BARE 3/0 CONNECTED TO THE NEUTRAL BUSS AND THE GROUND BUSS. THIS WAS TESTED AND FOUND TO HAVE 58 AMPS ON IT.
 4. THE ONLY GROUND CONNECTION ON "MAIN SERVICE 2" IT TO A GROUND ROD ON EITHER SIDE OF THE EQUIPMENT WITH A 3/0 THHN. BOTH 3/0 ARE CONNECTED TO THE GROUND BUSS IN THE BOTTOM OF "MAIN SERVICE 2". THE M.B.J. IS DONE WITH BUSSING.

○ BREAKER/EQUIPMENT SCHEDULE ○

NUMBER	MAKE	MODEL	AMP FRAME	AMP PLUG	PLUG #	COMMENTS/SETTINGS
1	GE	SSF20B220	2000 AMP	2000 AMP	TR20B2000	
2	GE	SKLA36AT0800	800 AMP	800 AMP	SRPK800A	I> SET TO MAX
3	GE	SGLA36AT0400	400 AMP	225 AMP	SPRG400A	
4	AUTOMATIC SWITCH CO.	F7ATBC3800N5XC	800 AMP	N/A	N/A	800 AMP A.T.S.
5	GE	SELA36AT0030	30 AMP	30 AMP		
6	GE	SELA36AT0060	60 AMP	40 AMP		
7	GE	SFLA36AT0250	250 AMP	225 AMP		
8	GE	SGLA36AT0600	600 AMP	400 AMP	SRPG600A	I> SET TO MAX
9	GE	SGLA36AT0600	600 AMP	600 AMP	SKPG600A	I> SET TO MAX
10	GE	SFHA46AT0250	250 AMP	225 AMP		
11	GE	SELA36AT0060	60 AMP	40 AMP		
12	GE	SFLA36AT0250	250 AMP	200 AMP		
13	POWER WARE	MODEL 300				300 KVA UPS (NO M.B.P.S.)
14	POWER WARE	MODEL 300 SYSTEM 9315 300				300 KVA UPS W/ M.B.P.S.
15	POWER WARE	MODEL MBM300/300 48/48				M.B.P.S.
16	GE	SGHA36AT0400	400 AMP	400 AMP	SRPG400A	I> SET TO MAX

◇ FEEDER SCHEDULE ◇

NUMBER	CONDUIT SIZE & TYPE	WIRE SIZE	GROUND	APROX. LENGTH
1	12X12 WIRE WAY	4 - 1000 MCM WELDING CABLE (X4)	1 - 4/0 RHW-2 1 - 350 MCM THHN	50'-0"
2	2 - 4" EMT	4 - 500 MCM	1/0 AWG	10'
3	2 - 4" EMT	4 - 500 MCM	1/0 AWG	60'-0"
4	BUSSDUCT	2000 AMP RATED BUSS	N/A	100'-0"
5	2 1/2" EMT	4 - 4/0 AWG	#4 AWG	195'-0"
6	2" EMT	4 - 3/0 AWG	#6 AWG	35'-0"
7	3/4" EMT	4 - #8 AWG	#10 AWG	35'-0"
8	CABLE IN CABLE TRAY	4 - 350 MCM	1/0 AWG (BARE)	40'-0"
9	2 - 2" EMT	4 - 3/0 AWG	#4 AWG	40'-0"
10	2 - 2" EMT	4 - 3/0 AWG	#4 AWG	10'-0"
11	2 - 3 1/2" EMT	4 - 350 MCM	#1 AWG	195'-0"

SINGLE LINE DRAWING NOTES:

1. ALL CONDUCTORS ARE CU WITH THHN INSULATION U.O.N.
2. FEEDER #1 IS CU WELDING CABLE (TYPE RHW-2)
3. FEEDER #8 IS A 5 WIRE CABLE RUN IN CABLE TRAY. IT HAS 4 350 MCM CU CONDUCTORS AND 1-1/0 BARE CU GROUND. IT IS A TYPE SOOJ CABLE.
4. AIC RATING FOR MAIN SERVICE IS 58 KAIC. THE RATING FOR GENERATOR IS 12 KAIC.

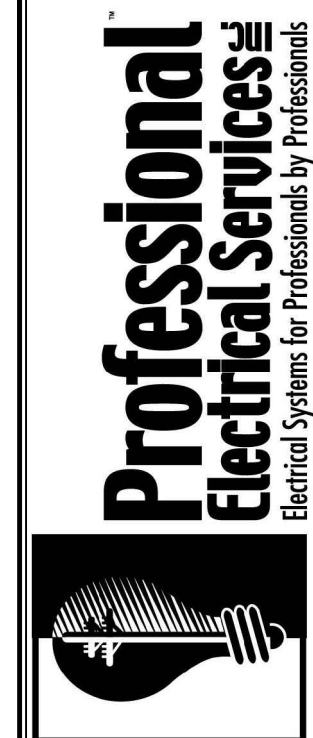
FOR QUESTIONS ABOUT THE DESIGN OR ENGINEERING CALL JOE URSINI AT PROFESSIONAL ELECTRICAL SERVICES (818) 612 3822

DESIGN/BUILD NOTES:

1. THESE DRAWINGS AND SPECIFICATIONS ARE THE SOLE PROPERTY OF AND COPYRIGHT BY PROFESSIONAL ELECTRICAL SERVICES, INC. THESE PLANS SHALL NOT BE USED, IN WHOLE OR IN PART BY ANY ENTITY OTHER THAN PROFESSIONAL ELECTRICAL SERVICES, INC. THESE PLANS REPRESENT A SCHEMATIC DESIGN/BUILD LAYOUT OF THE ELECTRICAL SYSTEMS; THESE PLANS MAY NOT INDICATE ALL MATERIALS THAT WILL BE REQUIRED TO PROVIDE A COMPLETE AND OPERATING ELECTRICAL SYSTEMS.

2. THESE PLANS WERE PREPARED UNDER THE EXEMPTION TO DIVISION 3 OF THE CALIFORNIA BUSINESS AND PROFESSIONS CODE BY SECTION 5537.2, AS THE LICENSED CONTRACTOR RESPONSIBLE FOR THE PREPARATION OF THESE DRAWINGS, ONLY PROFESSIONAL ELECTRICAL SERVICES, INC. MAY UTILIZE THEM.

2029 VERDUGO BLVD. #1034
MONTROSE, CA 91020
TEL: (818) 634-4512
LICENSE C-10 #842486



DATA CENTER
WILSHIRE BLVD
LOS ANGELES, CA 90010

REVISIONS:
Δ

DRAWING TITLE:

SINGLE LINE DRAWING (BASEMENT)

DRAWN BY:
D. URSINI

SCALE:
N.T.S.

DRAWN DATE:

14 MAR 2013

SHEET NO.

E-1